



Development Update

As our local parks and play spaces bloom this spring, Warralily's Armstrong Creek 'Green Spine' has again been recognised, this time by Australia's International Good Design Awards for Design Excellence. Warralily won the prestigious Gold Accolade in the Architectural Design Category for outstanding urban design and innovation, as well as the Special Accolade for 'Greener Spaces Better Places'. The awards celebrate the importance of green and living infrastructure design to make neighbourhoods better places to live, work and play.

The Good Design Awards Jury commented: "Warralily's landscape-led large scale vision has successfully transformed a degraded creek into a thriving ecosystem that is rich in biodiversity as well as creating social, economic and community connections. The creation of new play spaces and incorporation of art and environmental aspects adds to the quality. It now plays an important role as the lungs of the fast-developing master planned community within the ever-changing Armstrong Creek Growth Corridor. It is the backbone of this community and an incredible asset to have on its doorstep."

We couldn't agree more, especially during recent lockdowns when the community's access to the great outdoors was needed more than ever before! It is always wonderful to see so many Warralily residents out walking with dogs and prams, kids cycling or skating along with friends and fitness enthusiasts running and working out at exercise stations. It's exactly what a safe, healthy community looks like and we're so proud.

With life returning to normal in time for summer, Warralily's growing population of over 10,000 residents can also make the most of our beautiful beaches, coastline, wineries, arts and culture. It's a lifestyle that is increasingly in demand, aided by working-from-home, and the reason behind Warralily's strongest year ever with sales approaching 900 to date! And while we all enjoy the sun, sand and surf over coming months, work will continue on the award-winning green spine to link new neighbourhoods as our community expands. The landscape interface between the existing creek and new subdivisions along the Springs frontage will be enhanced with grass, garden beds and footpath connections.

We also continue the important job of bringing Armstrong Creek back to life and increasing its biodiversity along the southern side of the creek from the Surf Coast Highway to Transit Park, with a substantial weed control program and planting of tens of thousands of locally collected and propagated tube stock. Native grasslands will be sown in February/March 2022.

The Grange Village park is on track for December completion with works progressing well and, despite covid-related delays in shipping, we are expecting the spectacular playground equipment to arrive just in time for Christmas! Along the most southern edge of the Warralily estate, further stages of Alcoa Park will also be completed to provide additional exercise stations and another 3km of walking and cycling paths around Warralily.

Landscape improvement works at the Horseshoe Bend Rd intersection are underway and direct foot access to the Armstrong Creek Town Centre and Geelong Lutheran College is progressing in partnership with the City of Greater Geelong and with great support from Cr Ron Nelson. The boardwalk across the creek near the Surf Coast Highway and footpath connections have been constructed ready for future connection to the school and shopping precinct construction works.

And while the opportunities to get out and about amongst the environment are expanding, so are our shopping choices. Already spoilt with both the Village Warralily and Armstrong Creek Town Centre shopping hubs, our community will soon enjoy a brand new ALDI supermarket. Construction is well underway and we hear is due to be completed by the end of this year.

As the weather warms up, we hope you enjoy exploring the new parks and pathways as they open, as well as the many beautiful attractions of our region. Please support local and have a healthy and safe festive season. We look forward to 2022 and seeing this wonderful community continue to flourish.

Spring 2021

OUR COMMUNITY



Battling the wind meant we had to hold fast onto everything including kneepads! Planned over 2 hours, registered volunteers from the community came and passionately proceeded to plant each seedling with much care. The 86 seedlings were planted in collaboration with CoGG. The trees chosen by the CoGG are native to Armstrong Creek area. We look forward to organising another planting event in 2022, when restrictions are eased.



Hello Baby!

Congratulations to our Community Development Officer Nina on the arrival of baby Cohen Jean. Born 9th October 2021.



Councillor Column

Bruce Harwood, Kardinia Ward



One of the biggest issues being brought to global attention is the state of our mental health. Never before has so much emphasis been placed on the importance of how we obtain and maintain a healthy and positive mindset. Many events test us during our lifetime and how we deal with them ultimately comes down to our mental capacity to process the effect that has been imposed on us. And we know you don't have to be an older person to suffer a mental illness, as it comes in all manner of forms and everyone is different as to the true effects.

So, one of the ways council is helping our community here is through the continued development of what we affectionately call "The Men's Shed". It is primarily a space where men of all ages can gather and simply "talk and do men stuff".

The talking is about having a non-judgemental space where all manner of topics can be raised, debated and better understood. Basically "get it off your chest sessions". The doing is primarily working with wood and making any number of items.

Their woodwork creations and other projects for schools, charities and community groups are of a high quality and made with care. From the very simple to somewhat more complicated. But all the while people are conversing, learning about others' lives and hearing stories of hardship and the good times.

And it is great that the Mt Duneed Community Shed will become the new home for the Mt Duneed Men's Shed (formerly the Grovedale Men's Shed), which has moved between temporary sites during recent years. The shed at Sovereign Drive Sporting Reserve will include a multipurpose creative space for the broader community to make good use of.

Work will start at the site in mid-October, with hopes that construction will finish up by February 2022. The design includes scope for a community garden to be included at the site in the future. If you're part of a community group and are keen to get a garden going at this facility, please get in touch with the City. Men's sheds provide a welcoming space for men to pick up a new skill, socialise and learn about men's health issues.

Local Updates from Darren Cheeseman MP

As your local State MP, I have been lobbying for greater investment in our community to cater for the massive growth we are experiencing. The Victorian Government is delivering massive new infrastructure projects in our area, new ways to help first homebuyers, and a variety of programs to assist families with their cost of living expenses. Here are a few highlights below:

Get Active Kids Vouchers: \$200 vouchers for kids sport are available now, to check if you are eligible visit getactive.vic.gov.au. Vouchers can be spent on equipment, uniforms or club membership fees.

New Homebuyer Fund: The Victorian Government is helping more Victorians buy their own home with the launch of the Victorian Homebuyer Fund. Eligible participants only require a 5% deposit, and the Government will provide up to 25% of the purchase price, in exchange for an equivalent share in the property that can be bought out. To apply, visit www.sro.vic.gov.au/homebuyer

More Affordable Housing: The Government is investing in dozens of new social houses in our area, so that vulnerable Victorians can have a roof over their heads. Across the state 1000 new houses have been bought already, with thousands more on the way.



Follow my Facebook page at facebook.com/darrencheesemanmp for further updates on what the Andrews Government is doing for our region. If you have any enquiries, please get in touch with the below details.

Darren Cheeseman MP Labor Member for South Barwon

P: 03 5243 5222 E: Darren.Cheeseman@Parliament.vic.gov.au



Elf Adventure Trail is back!

Get out and about this November and December and find the hidden signs around Warralily to solve the cracking Christmas puzzle.

See socials for more info

St Catherine Of Siena Armstrong Creek

By Karen Cartwright



This bold school motto is supported by a caring and collaborative learning environment that empowers students to be their best selves.

Foundation Principal Donna Bryce has a passion for ensuring every child feels safe, inspired and confident to learn and has recruited teachers who believe the same.

"As principal, I strongly encourage positive relationships and a nurturing educational experience," said Principal Bryce. "St Catherine is a learning community of faith that aspires to engage each student to excel as lifelong learners."

This learning philosophy is seen through the school's focus on enhancing each child's wellbeing through regular exercise and mindfulness. The schools buddy and leadership programs are other examples that build individual and collective wellbeing. While the school choir, bike education and external optional programs of Kelly Sports and the Music Bus allow students to explore their passions.

The popular Stephanie Alexander Kitchen Garden program provides a unique opportunity to feed hungry minds with positive food habits and eco-friendly behavior. The diverse learning platform enables children to share in healthy food experiences and develop their understanding of environmental sustainability.

"Pleasurable food education is about experiencing the joys of digging in the garden, picking fresh veggies, smelling and tasting the food they prepare and sharing the experience with their friends and helpers."

All students are energised to pursue excellence through innovative teaching in the foundations of English and mathematics, as well as specialist programs in Literary Appreciation, Performing and Visual Arts, Physical Education and Spanish.

St Catherine of Siena is a Catholic co-educational primary school open to all families who are supportive of the Catholic mission and traditions of Catholic education.

The school boasts a state-of-the-art, research-based educational facility designed to grow over four stages to accommodate an eventual enrolment of 500 students. The \$5.7 million first stage on the 2.8-hectare site is complete and includes two-storey teaching, learning and administration areas, adventure playgrounds with grassed and hard-court play areas. Construction of the second stage is underway.

"We have been overwhelmed by wonderful community support for our new school and look forward to learning and growing together with Armstrong Creek and the Nazareth Parish."



TLC Healthcare's CEO,
Lou Pascuzzi

TLC to commence mandatory rapid antigen testing

From September 9, TLC Healthcare (TLC) will be introducing a rapid antigen testing program at their 11 residential aged care homes located across Melbourne and Geelong. This program is a critical step in preparing for the changes that will be introduced when 80% of the Australian population is vaccinated against COVID-19. TLC will be the first aged care provider in Australia to rapid antigen test every visitor to their homes, with the test taking around 10-15 minutes to complete. The rapid antigen test that TLC will utilise is 95% effective and has been approved by the TGA in Australia, and the FDA in the United States.

Any staff or contractors that are ineligible to receive the COVID-19 vaccine will also take a test at the beginning of each shift, in addition to their fortnightly PCR test. TLC's CEO, Lou Pascuzzi, says that this program will once again position them as the aged care industry leaders in the management of COVID-19.

"In the absence of any guidance on how the aged care sector should deal with the challenges of living with COVID-19 come November, TLC will once again be taking the initiative upon itself to implement proactive measures.

For more information visit tlchealthcare.com.au



Regional Renewable Organics Network

The City has partnered with Barwon Water and five other local councils to transform food, garden and commercial organic waste into renewable energy and nutrient-rich products for agriculture.

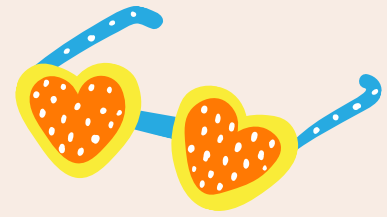
Council has a sustainability target of diverting all household waste from landfill by 2030-31. A key feature of this will be a municipal-wide food waste collection service.

A weekly household collection trial will begin in November 2021. The 12-month trial will be evaluated in late 2022, before the service is gradually introduced to further areas in 2023.

The service is expected to be rolled out across Greater Geelong by early 2024. It is our aim that the food waste be processed at the RRON when it becomes operational in 2024.

For more information visit barwonwater.vic.gov.au

HOLIDAY AT HOME



Make the most of Summer and explore your own backyard

1. Hike the You-Yangs Regional Park



Situated only 22km North of Geelong the 340-metre high granite peaks of the You Yangs prove themselves to be one of the most popular day trips.

With magnificent views and birdlife, you'll find a diverse range of landscape and scenery. Towering with sparse native trees and eucalyptus, you may even spot a koala and other wildlife along your voyage. Bike riding more your thing? No problem, take your mountain bike along and explore more than fifty kilometres of trails, perfect for beginners and experts. You can even reach the highest point and be prepared to be amazed by the views of Melbourne and Geelong.



2. Test yourself at Live Wire Park

Known as one of Australia's most electrifying adventure parks, it's all about unplugging, recharging and setting your senses alight with the beauty of the Great Ocean Road whilst zip lining, roller coasting, climbing, exploring and wandering through this world class adventure experience.

It's located in Lorne, so just over an hour from Geelong but you will have to book ahead. There are a few different experiences on offer too, so it caters to any type of adventurer – whether you prefer a nice, cruisy treetop walk, or you're wanting to challenge your physical and mental abilities.



3. Family Fishing Charter at Apollo Bay



Apollo Bay Fishing Charters have been sailing these seas for many years and know all the best spots to hook a BIG one in these pristine waters. If you're new to fishing, want to bring the kids or worried about getting sea-sick, then this is the best option. But don't think that means the fish are any smaller!

Their 4 hour tour is the perfect amount of time for families to test out the waters with their kids and enjoy reeling in a catch.



4. Great Ocean Road Wildlife Park

This wildlife park is 15 minutes from the 12 Apostles. It is a multi-faceted experience filled with simple fun activities and educational lessons about the environment and the animals featured on the 40 acre farm.

Kids will love the close animal encounters that are located right next to the visitor centre – you really don't have to walk far to bump into your first peacock or visit the Petting Zoo enclosure where you and the family can snuggle up to animals such as wombats, kangaroos, alpacas. Or take the time to learn about the conservation of Aussie Dingoes and even get a cheeky cuddle.



5. Explore The Redwoods and The Otways

Located an hour and a half from Geelong and tucked within the heart of the Otways, on the banks of the Aire River south of Beech Forest surrounded by the native eucalypts, stands a spectacular forest of Californian Redwoods (*Sequoia sempervirens*) worthy of a day trip.

This 85 year old plantation of Californian Redwoods has become a favourite local picnic area, and walking between the massive trunks flanking the river for the first time creates a special feeling of awe and reverence – one that's really not to be missed in your lifetime.





Felix's Facts

One of the surest signs of spring is frogs singing. Here's some fun froggy facts for you:



A group of frogs is called an army.



There are over 5,000 species of frogs in the world.



Some frogs can jump over 20 times their own body length; that is like a human jumping 30m

Land Sales Office Re-open

The office will re-open in line with the government retail guidelines. As a result, the following will be required to enter the sales office:

- Masks to be worn inside
- Anyone entering the office must check in via the QR code.
- Anyone entering the office must provide proof of being fully vaccinated

Acceptable proof of your COVID-19 vaccination status



COVID-19 Digital Certificate via the Service Victoria app



COVID-19 Digital Certificate saved to smart phone



Printed copy of COVID-19 Digital Certificate together with photo ID



Printed copy of Immunisation History Statement together with photo ID



Medical Exemption together with photo ID

For more information please visit:

Warrality Sales Office
6 Anglet Way, Armstrong Creek, 3217
Ph: 1300 458 193
warrality.com.au

